



# Palazzo Sogno

Scheduled opening: winter 2026

Via Paolo Sacchi 20  
Turin TO 10128  
Piedmont



In the heart of **Turin**, a short walk from **Porta Nuova Station**, Palazzo Sogno is a four-star hotel that combines the elegance of a historic building with the comfort of contemporary design. Once home to a renowned cinema, the building has undergone a careful transformation that has given it a new identity as a place dedicated to hospitality and experience. The redevelopment has also enabled the building to obtain **LEED® Platinum certification**, the highest international recognition for environmental sustainability in buildings, confirming its commitment to responsible and innovative hospitality.

The hotel has **99 modern and functional rooms**, designed to accommodate both business travellers and those who choose Turin for pleasure, with spaces that are carefully designed to ensure maximum comfort.

Palazzo Sogno is also the ideal location for **events and business meetings**: it offers a **100-seat convention room**, which can be divided into two separate rooms with 70 and 30 seats, **2 fully equipped board rooms**. The experience is completed by spaces dedicated to wellness and conviviality: a **SPA with treatment rooms**, a state-of-the-art **gym**, a **restaurant** immersed in a charming **winter garden** and a **rooftop** with views of the city: places to relax, recharge your batteries and enjoy memorable moments.

## SERVICES



RESTAURANT



LOUNGE BAR



TERRACE



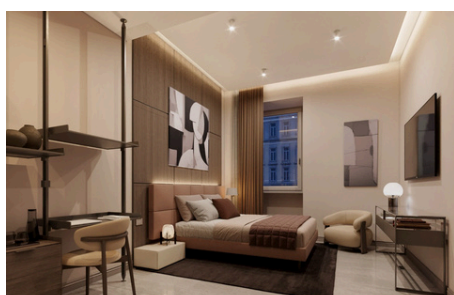
SPA



GYM



MEETING ROOMS



## ROOM TYPE

### Accommodations: 99

- 43 Classic - 19 sqm
- 18 Classic with balcony - 19 sqm
- 17 Superior - 22 sqm
- 6 Deluxe - 30 sqm
- 4 Junior suites - 31 sqm
- 8 Suites - 35 sqm
- 3 Suites Superior - 35 sqm

### Additional accommodation:

- 9 Family suites - 40 sqm

## DINING/MEETING/EVENTS

- Restaurant - Winter garden (100 pax)
- Rooftop
- Meeting rooms:
  - 2 Boardroom (4-6 pax)
  - Large room (70 pax)
  - Small room (30 pax)

## NEARBY

- Turin Porta Nuova Station - 270 m
- Re Umberto Metro Station - 600 m
- Civic Gallery of Modern and Contemporary Art - 1 km
- Piazza San Carlo - 1,8 km
- Egyptian Museum - 2 km
- Mole Antonelliana - 3 km
- Turin Airport - 20 km